

NATIONAL ASIAN AMERICAN SURVEY

BRIEFING AND BOOK OVERVIEW

SEPTEMBER 1, 2011

JANELLE WONG, KARTHICK RAMAKRISHNAN,
TAEKU LEE, AND JANE JUNN

National and Local Results

Co-Sponsored by



Janelle Wong, Director, Institute of Public Service, Seattle University

Karthick Ramakrishnan, Political Science, UC Riverside

Taeku Lee, Political Science, UC Berkeley

Jane Junn, Political Science, University of Southern California

Support from Carnegie Corporation of New York, Russell Sage Foundation, James Irvine Foundation, Eagleton Institute of Politics (Rutgers, State University of New Jersey)

WHY PAY ATTENTION TO POLITICS OF ASIAN AMERICANS?

3

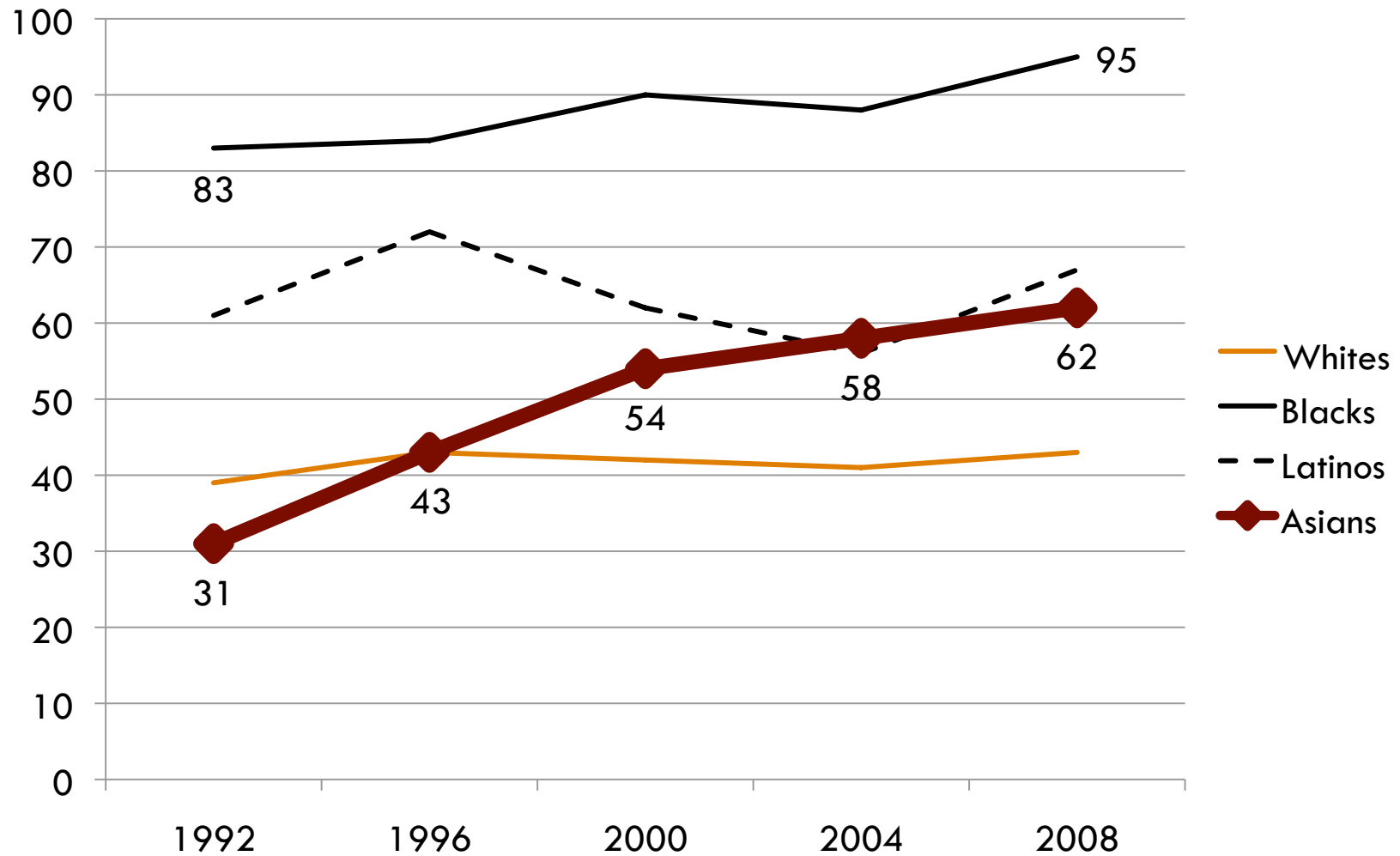
- **Fastest-growing racial group**
 - Increasing geographic dispersion

- **SES puzzle with respect to voting**
 - SES diversity within the group

- **Party ID still in formation**

STRONGEST SHIFT IN VOTING DEMOCRAT

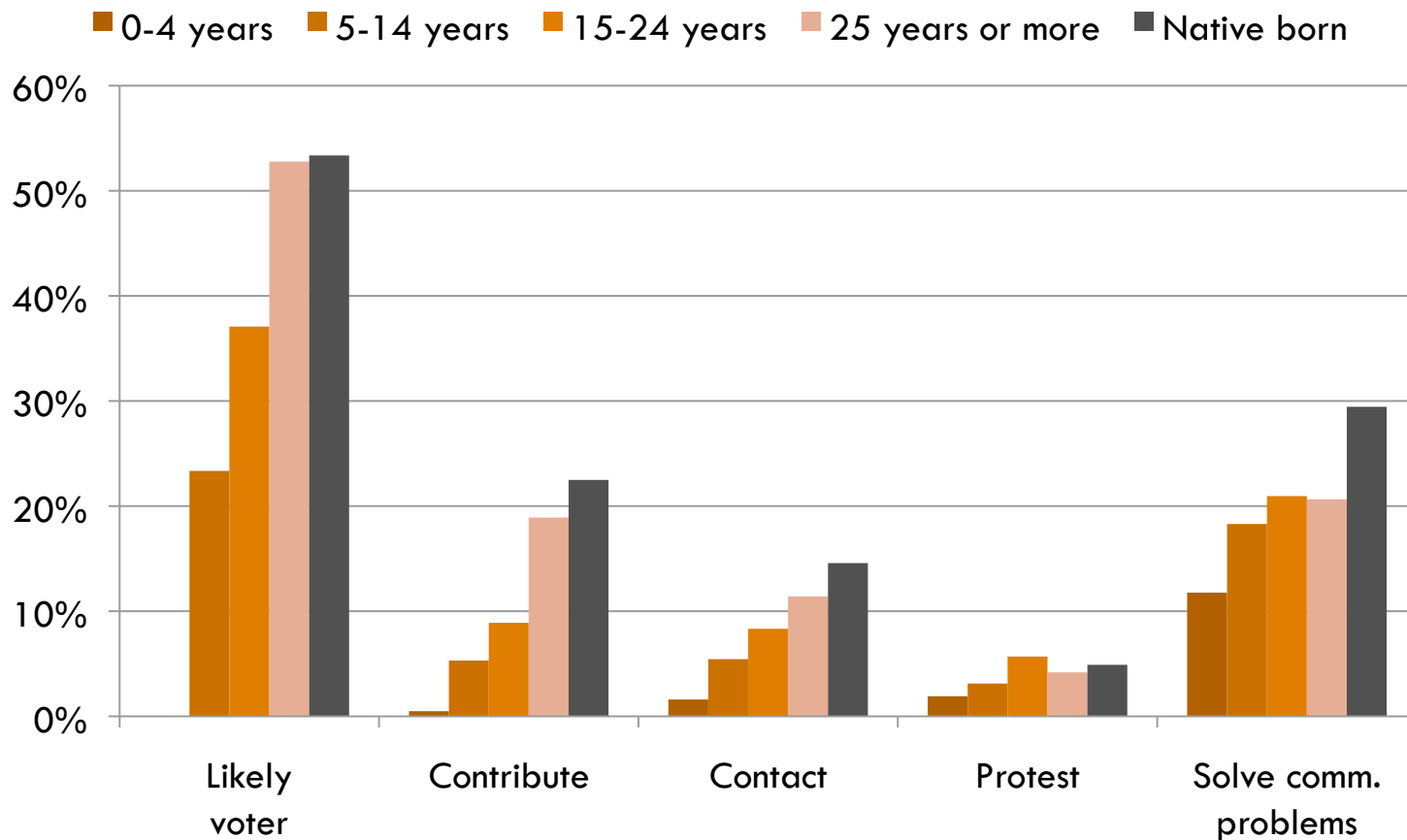
4



Source: National Election Pool, as reported in the New York Times

LONGER STAY IN US, MORE PARTICIPATION

5



2008 NATIONAL ASIAN AMERICAN SURVEY (DATA)

ICPSR, www.naasurvey.com

(Karthick Ramakrishnan, Jane Junn, Taeku Lee, Janelle Wong)

SURVEY CHARACTERISTICS

7

- 5,159 telephone interview of adult Asian Americans
 - August 18 – October 29, 2008

- 6 primary ethnic subgroups:
 - 1,350 Chinese, 1,150 Asian Indian, 719 Vietnamese, 614 Korean, 603 Filipino, 541 Japanese, and 182 “Other Asian.”

- 8 interview languages:
 - 40% in non-English language (Vietnamese, Korean, Mandarin, Cantonese, Tagalog, Japanese, Hindi)

- National sample and regional targets:
 - Regional targets: California, NJ/NY, “new destinations”

STATE SAMPLES

8

- Washington State = 192 completed interviews
- New York = 432
- Texas = 256
- Virginia = 195
- Hawaii = 121
- California = 1,000 + (oversample)

SURVEY QUESTIONS

9

A. Ethnicity and migration history

- Includes city where they first moved in the U.S.

B. Media consumption and issue salience

- Language of media (TV, radio, print, www); issues affecting country vs. personally

C. Political participation and 2008 election

- Includes mobilization, primary vote, beyond voting

D. Party ID and public opinion

- Includes parents' party ID (US born), party stance on most salient issue

SURVEY QUESTIONS

10

E. Racial identity

- Includes linked fate, racial group distance, detailed discrimination battery

F. Religion and civic engagement

- Denomination, frequency, demographics of civic group

G. Demographics

- Year of naturalization, education abroad, race of partner

H. Contextual data

- State, county, new vs. traditional destination

ASIAN AMERICANS IN WASHINGTON STATE

11

Percent	NAAS Washington	NAAS National
Asian Indian	11	18
Chinese	29	28
Filipino	16	21
Japanese	15	9
Korean	13	12
Vietnamese	15	11

Data are weighted by national origin, nativity, gender, education, citizenship and length of residence in the US

DEMOGRAPHICS

12

Percent	Washington	National
Foreign born	80	81
Average Length lived in US	16	16
Citizen	73	65
English language interview	57	43

POLITICAL PROFILE

13

Percent	Washington State	National
Republican	14	14
Independent	48	54
Democrat	37	31
Likely voter 2008	41	45
McCain*	23	24
Obama	44	39
Undecided	33	37

*Among registered or planning to register

<http://naasurvey.com>

POLITICAL PROFILE

14

Percent	Washington State	National
Absentee voter 2004	57	30
Belong to civic organization	17	18
Worked on campaign	2	3
Made political contribution	13	13
Participated on-line	10	12
Contacted gov't official	12	9
Worked with others in community to solve a problem	27	21
Protested	11	4

*Among registered or planning to register

<http://naasurvey.com>

POLITICAL PROFILE (CON'T)

15

Percent	Washington State	National
Asked to participate by political party	28	26
Asked to participate by other organization	15	15
Represented by Asian American elected official (any level of government)	57	30

ASIAN AMERICANS IN WASHINGTON

16

- More likely to
 - protest
 - be represented by an Asian American elected official
 - have high English proficiency
 - be Democrats
 - be citizens
 - vote absentee
 - report discrimination by shopkeepers, in retail context (28 percent vs. 22 percent)

WA ASIAN AMERICANS: SIMILARITIES WITH ALL ASIAN AMERICANS

17

- Ethnic identification
- Use of ethnic media
- Opinions on political issues
- On these issues, national origin likely to matter

GROUP DIFFERENCES (ALL ADULTS)

18

	Likely voter*	Political contributor	Contact government officials	Protester	Community Activist
TOTAL	45%	13%	9%	4%	21%
Asian Indian	47%	12%	11%	4%	27%
Chinese	39%	11%	9%	4%	19%
Filipino	47%	17%	13%	4%	23%
Japanese	65%	18%	10%	3%	17%
Korean	40%	11%	5%	3%	18%
Vietnamese	48%	7%	5%	8%	21%

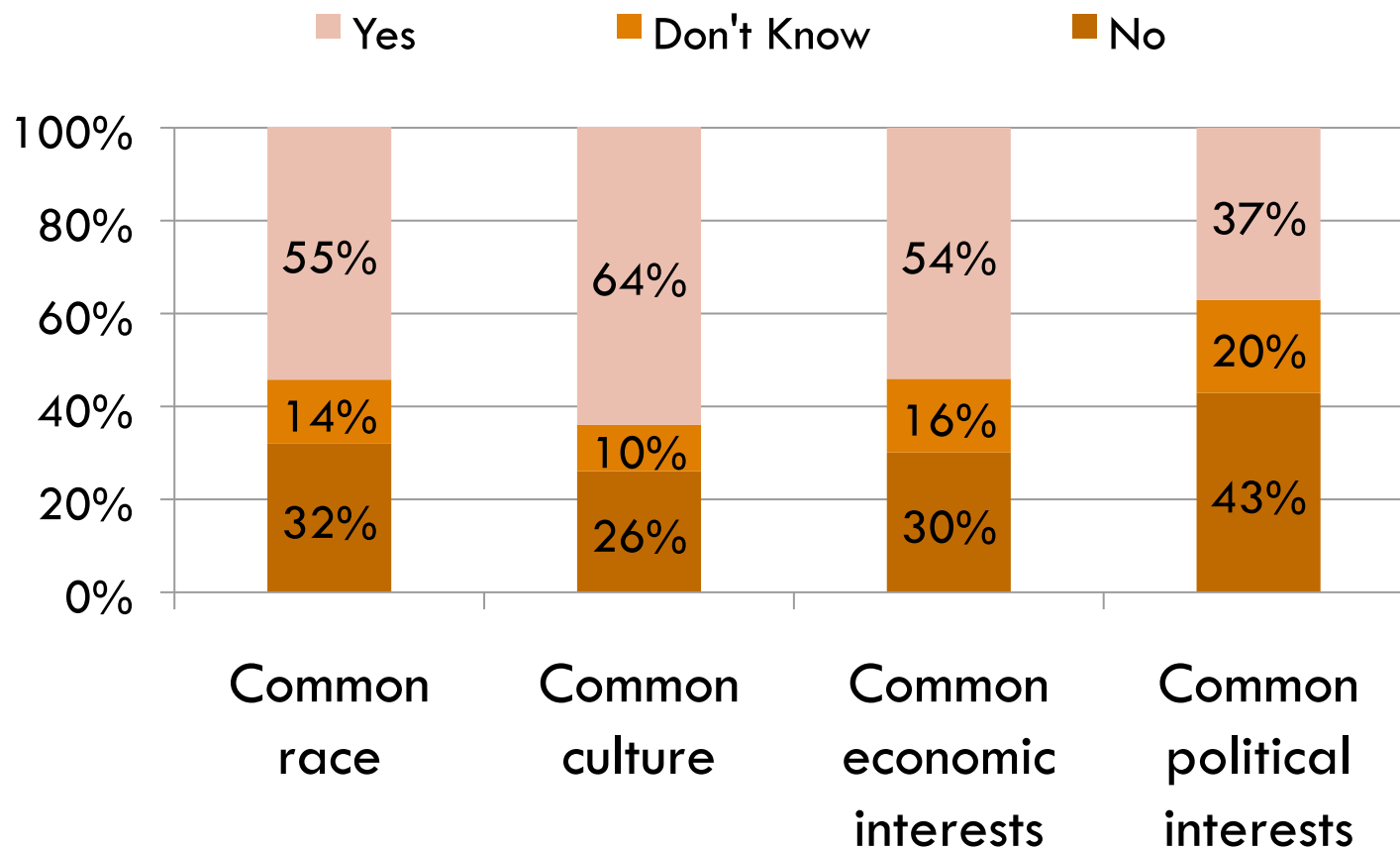
* Among adult citizens

IDENTITY

19

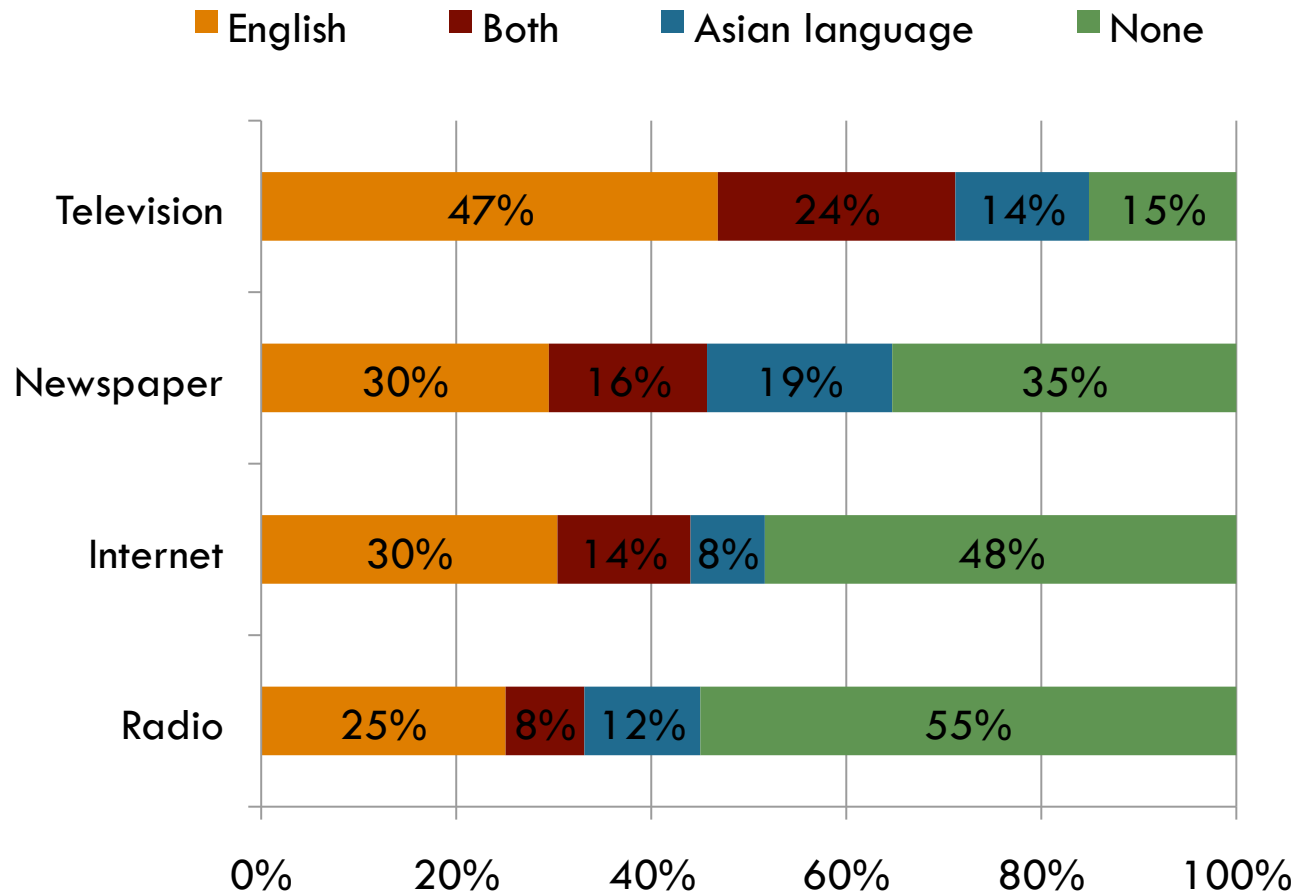
	ASN IND	CHIN	FILIP	JAPA	KOR	VIET	TOTAL
Ethnic American	36	40	46	44	64	69	47
Ethnic Group	28	38	40	36	70	37	40
Asian American	21	20	15	13	43	20	21
Asian	12	17	15	12	48	16	19
American	6	4	3	5	2	1	4
Other	3	2	5	4	0	2	3

COMMONALITIES WITH OTHER ASIANS



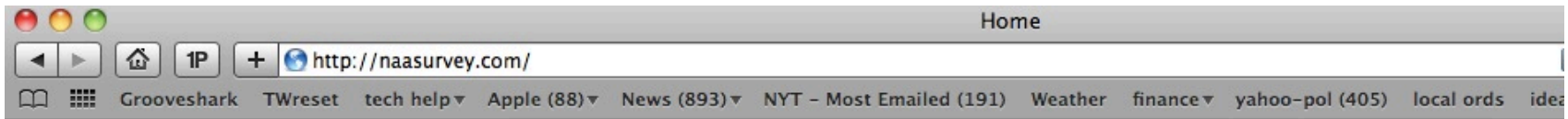
ETHNIC POLITICAL NEWS CONSUMPTION

21



OPINIONS ON ISSUES

Percent	Washington State	National
Somewhat or strongly support universal healthcare	82	81
Somewhat or strongly support making abortion legal in all cases	32	35
Somewhat or strongly support provide path to citizenship for undocumented immigrants	33	33



Home **More information**



The NAAS is a national survey of Asian Americans, and is collaboration between professors at the University of California and the University of Southern California.

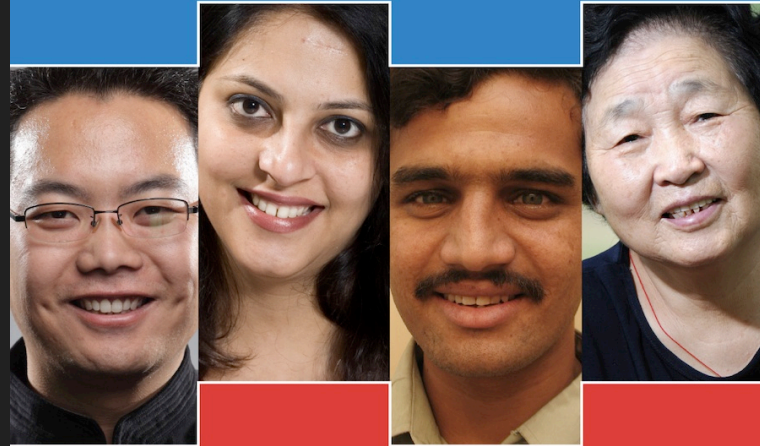
In the spring of 2009, we presented data on Asian American policy preferences, party attachments, political participation, and mobilization. We made presentations in Berkeley, CA, and Chicago, IL. These results are based on our survey of over 5,000 respondents, including those collected in October. The presidential election reports below include data until the end of September.

[Survey questionnaire](#)

[Community Presentation in New York City](#) (July 2009)

[Patterns and Puzzles in Asian American Politics](#) (Chicago presentation, April 2009)

ASIAN AMERICAN POLITICAL PARTICIPATION



Emerging Constituents and Their Political Identities

**Janelle Wong, S. Karthick Ramakrishnan
Taeku Lee, and Jane Junn**

Russell Sage (Sept 2011)
Discount Copies Available